



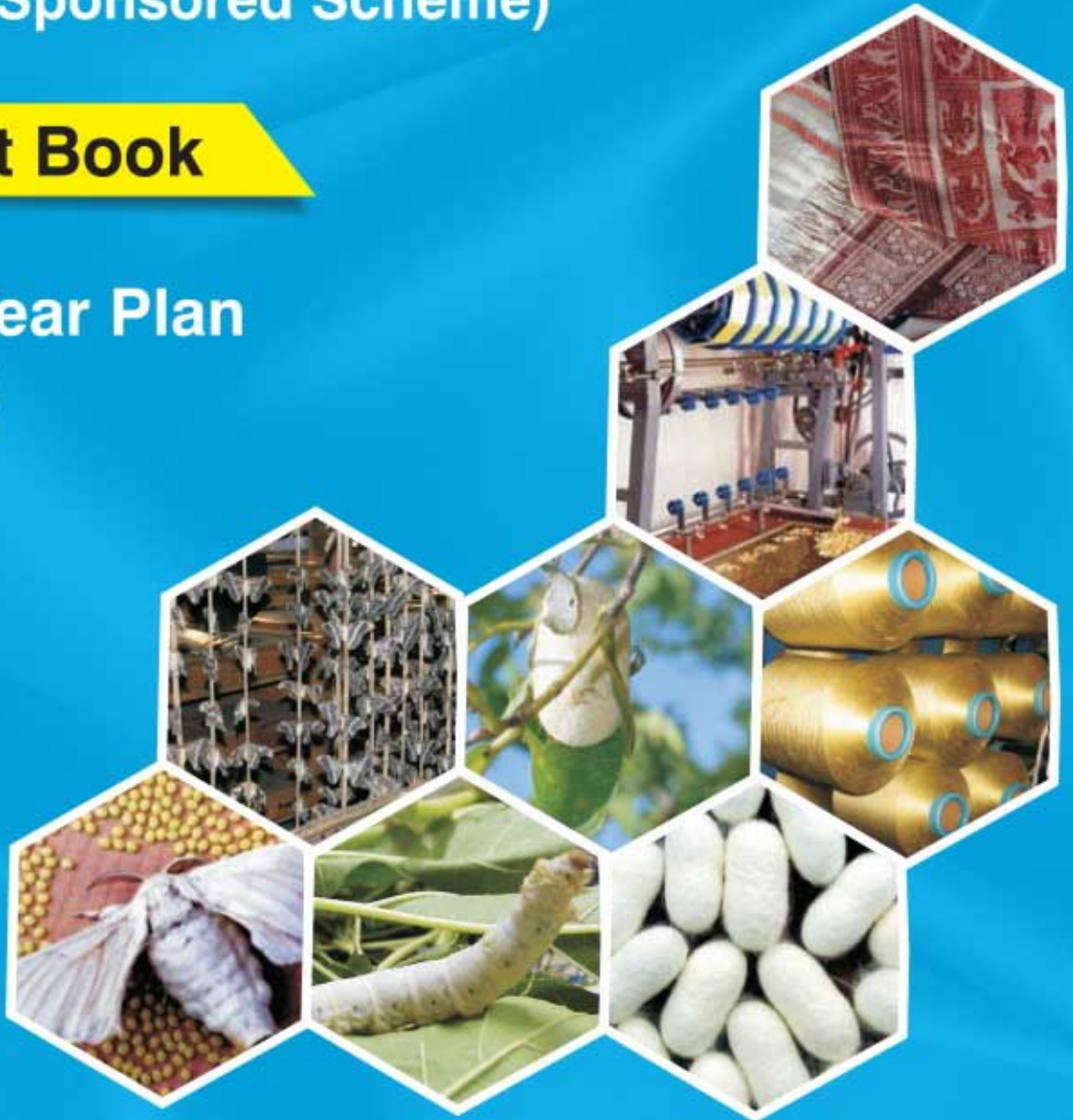
सत्यमेव जयते

MINISTRY OF TEXTILES  
(Government of India)

# Catalytic Development Program (Centrally Sponsored Scheme)

## Unit Cost Book

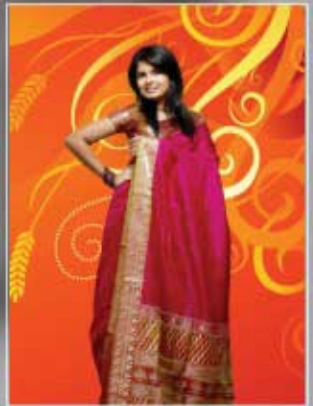
XII Five Year Plan  
(2012-17)



Udyog Bhavan, New Delhi, India  
September, 2013



# Mulberry





MINISTRY OF TEXTILES  
(Government of India)

# Catalytic Development Program (Centrally Sponsored Scheme)

Unit Cost Book

## XII Five Year Plan (2012-17)

Udyog Bhavan, New Delhi, India  
September, 2013

Printed and published by:

Smt. Ishita Roy, IAS

Member Secretary

Central Silk Board

(Ministry of Textiles, Government of India)

BTM Lay Out, 100 ft Ring Road, Madiwala, Bangalore - 560 068

Ph.: 080-2628 2699, Fax: 080-2668 1511, [www.csb.gov.in](http://www.csb.gov.in)

# CONTENTS

<b>CHAPTER I: MULBERRY SECTOR</b>	<b>01 - 30</b>
<b>A. Mulberry Seed</b>	
1. Franchise disinfection program of NSSO	03
2. Support to construct rearing houses for adopted seed rearers of NSSO	04
3. Revolving capital fund support for state grainages and RSPs	07
4. Assistance for purchasing seed testing equipment for state grainages and private RSPs	08
5. Support to strengthen basic seed farms of states	09
6. Support to upgrade state and private commercial seed production units	10
<b>B. Mulberry Cocoon: Bivoltine and Improved Cross Breed</b>	
1. Support for mulberry bush plantation development	11
1 A. Support for mulberry tree plantation development	12
2. Assistance for irrigation and other water conservation and usage techniques	13
3. Supply of rearing appliances (including improved mountages)/farm equipment to farmers	14
4. Supply of quality disinfecting materials and other crop protection measures for farmers	15
5. Assistance for construction of rearing houses	16
6. Assistance for maintenance of chawki garden, construction of chawki rearing centre and procurement of chawki rearing equipment	18
7. Production units for biological inputs/door-to-door service agents for disinfection and input supply and assistance for sericulture poly-clinics	20
8. Support for development of kisan nurseries	23
9. Maintenance cost for mulberry plantation raised during X and XI Plans	25
10. Support for construction of vermi-compost sheds	26
11. Assistance towards fencing of mulberry gardens in north-eastern states	27
12. Assistance towards expansion of rearing houses to construct mounting halls in north-eastern and hilly states	28
13. Support for increasing the yield of existing rain-fed mulberry gardens through water conservation techniques	29
<b>CHAPTER II: VANYA SECTOR</b>	<b>31 - 88</b>
<b>A. Vanya Seed</b>	
<b>I. TASAR</b>	
1. Assistance to private tasar graineurs	33
1 A. Assistance to existing tasar graineurs for upgradation of seed production capacity	35

2.	Assistance for strengthening of tasar seed multiplication infrastructure (Tropical tasar)	36
2 A.	Establishment of basic seed production units (SHGs, co-operatives/NGOs)	37
3.	Assistance for strengthening of tasar seed multiplication infrastructure (Oak tasar)	40
4.	Assistance for tropical tasar rearers	43
4 A.	Assistance for oak tasar seed rearers	44
4 B.	Assistance for mobile testing facility for disease monitoring and seed cocoon testing	45
II.	<b>ERI</b>	
5.	Assistance to state departments for strengthening of eri farm-cum-grainages	46
5 A.	Assistance to eri private graineurs	49
5 B.	Assistance to eri adopted seed rearers	51
5 C.	Upgradation of state eri basic seed farm-cum-grainages	52
5 D.	Assistance for establishment of self help eri grainage units	54
5 E.	Mobile testing and certification units	55
III.	<b>MUGA</b>	
6.	Assistance to muga private graineurs	56
6 A.	Assistance to existing muga private graineurs for upgradation of seed production capacity	58
7.	Assistance to state departments for strengthening of muga seed multiplication infrastructure (P2)	59
7 A.	Assistance for establishment of muga P3 basic seed production unit	62
7 B.	Assistance to muga adopted seed rearers	65
B.	<b>Vanya Cocoon</b>	
I.	<b>TASAR</b>	
1.	Support to rearers for augmentation of tasar host plantation	67
1 A.	Assistance to beneficiaries for raising tasar food plant seedlings (Kisan Nursery)	68
1 B.	Assistance to tasar commercial rearers for development of chawki garden	69
1 C.	Assistance to tasar rearers for maintenance of existing chawki plantation	70
1 D.	Assistance to tasar rearers for maintenance of existing tasar plantation	71
1 E.	Conservation and utilization of sal based tasar eco-races	72
2.	Assistance for raising and maintenance of systematic oak tasar plantation	74
3.	Assistance for construction of cocoon storage houses in tasar sector	75
3 A.	Assistance for construction of cocoon storage and stifling facilities for tasar rearers	76
II.	<b>ERI</b>	
4.	Support for castor/tapioca cultivators with start-up tools	78
5.	Augmentation of perennial eri food plants with supply of start-up tools	79
5 A.	Assistance for raising kesseru food plants nursery	81
6.	Assistance for construction of Eri rearing houses	82
III.	<b>MUGA</b>	
7.	Augmentation and maintenance of muga food plants with start-up tools	84
7 A.	Assistance for raising muga food plants nursery	86
7 B.	Assistance for maintenance of existing muga food plantation	87

CHAPTER III: POST-COCOON SECTOR	89 - 128
A. Reeling and Spinning	
I. MULBERRY	
1. Support for construction of reeling sheds	91
2. Support for motorized charkha to dissuade child labour	97
3. Support for establishment of improved cottage basin reeling units	98
4. Support for establishment of multi-end reeling units	100
5. Support for establishment of automatic reeling units	103
6. Support for establishment of automatic dupion reeling units (142 ends)	105
7. Assistance for twisting units (480 ends)	106
8. Interest subsidy on working capital loan sanctioned by banks to reeling units	107
9. Incentive for production of bivoltine silk	115
II. VANYA	
10. Support for <i>Vanya</i> reeling/spinning sector	116
10 A. Reeling-cum-twisting machines	116
10 B. Wet reeling machine (2 basins of 6 ends each)	117
10 C. Two-in-one reeling-cum-twisting machine	118
10 D. Tasar cocoon sorting machine for co-operatives/SHGs	118
10 E. Motorised/pedal operated spinning machine	119
10 F. Solar operated spinning machine	119
III. GENERAL	
11. Providing services of master reelers/technicians	120
B. Post-yarn	
12. Support for handloom sector	121
12 A. Loom upgradation through jacquards and other equipments developed by CSTRI	121
12 B. Pneumatic lifting mechanism for handlooms developed by CSTRI	121
13. Support for setting up of common facility centre for yarn dyeing and fabric processing (special technology package developed by CSTRI)	122
14. Providing services of master weavers/ designers/ dyers/ technicians	126
C. Marketing Support	
15. Support to states for creating/upgrading marketing infrastructure for cocoon and raw silk.	127
16. Support for setting up of hot air driers	128
CHAPTER IV: SUPPORT SERVICE SECTOR	129 - 134
1. Crop insurance support (for all sectors )	131
2. Capacity building for sericulture sector	133
3. Developing community based organizations in line with resham doot concept	134
ABBREVIATIONS	135 - 136

